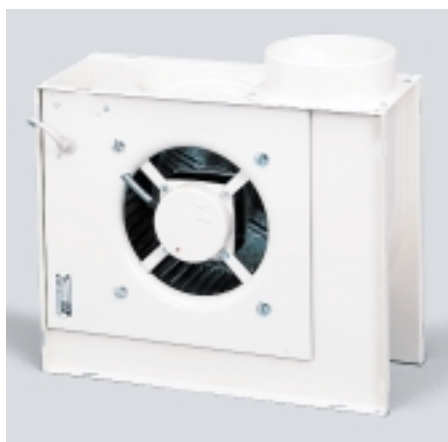


CENTRIFUGAL DIRECT DRIVE FANS

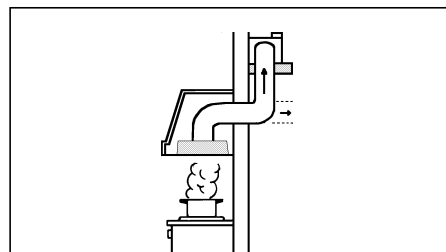
CKB Series



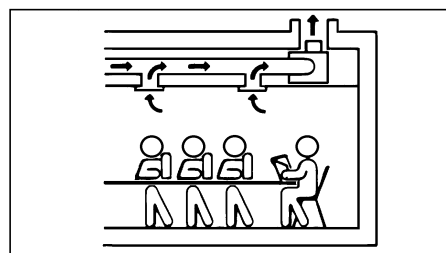
Description

Range of direct-drive centrifugal low pressure fans with a squared frame to ease their installation. They are fitted with a backdraught damper at the outlet.

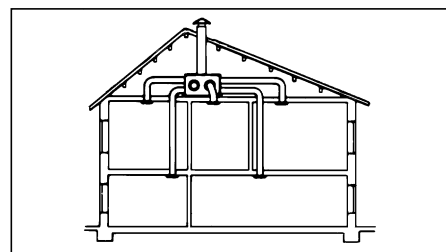
Applications



Residential cooker hood extractors



General ducted ventilation systems (offices, classrooms, commercial premises.)



Powerful residential centralised ventilation systems.

Construction

Casings

The CKB casings are manufactured from electro-welded sheet steel and protected with a beige epoxy-polyester paint coating. All models incorporate a backdraught damper which is fitted at the fan outlet to prevent air entry when the fan is not in operation.

Impellers

All CKB models incorporate forward curved centrifugal impellers manufactured from galvanised sheet steel. The impeller is dynamically balanced to ISO 1940 standards.

Motors

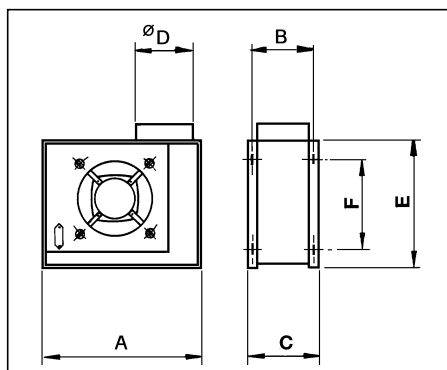
All models incorporate single phase, 230V 50Hz asynchronous induction motors in die cast aluminium, manufactured in accordance with IEC 34-1 standards. The following standard specifications apply:

- 230V 50Hz single phase with capacitor motors.
- Class I electrical insulation
- CKB600 and 800, IP40 protection.
- CKB1200 and 2000, IP44 protection.
- Class B motor insulation, suitable for ambient temperatures up to +40° C.
- Auto- Reset safety thermal overload protection.

Technical characteristics

Model Type	Speed (r.p.m.)	Maximum power absorbed (W)	Maximum current absorbed (A)	Maximum air volume (m ³ /h)	Sound pressure level dB(A)	Weight (kg)
CKB-600	1300	140	0,66	600	54	7,5
CKB-800	1300	175	0,92	800	60	8,0
CKB-1200	1300	300	1,44	1200	60	12,0
CKB-2000	1300	560	2,75	2000	65	16,5

Dimensions (mm)



Type	A	B	C	Ø D	E	F
CKB-600	408	133	153	128	340	265
CKB-800	408	163	182	148	340	265
CKB-1200	423	163	182	148	366	295
CKB-2000	470	192	215	200	420	345

Performance curves

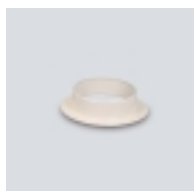
- Q = Air Volume in, m³/hr and m³/s
- Pe = Static Pressure in mm.c.d.a and Pa.
- Air Density at 200C and 760 mm.c.d.Hg.
- Air flow data in accordance with the following standards:

UNE 100-212-89, BS 848, Part 1,
AMCA 210-85 and
ASHRAE 51-1985.

Specific accessories



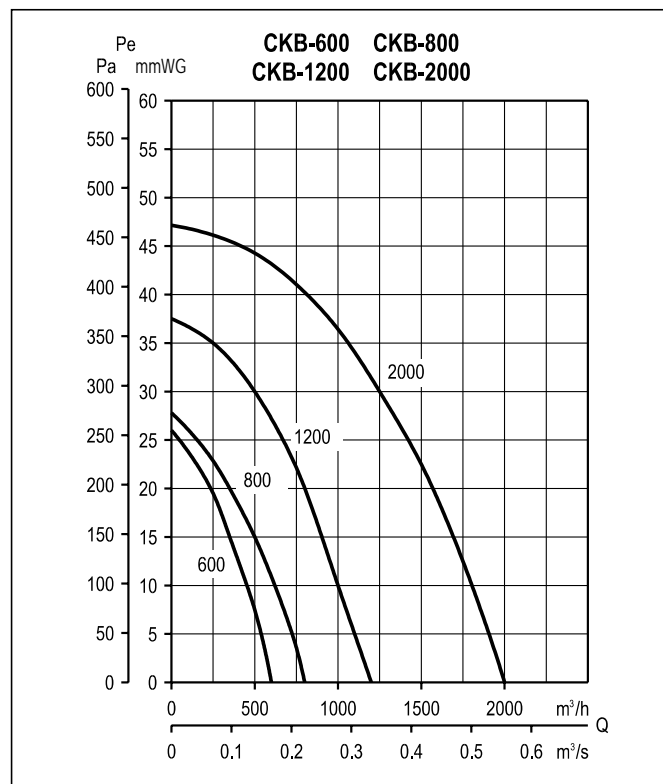
Inlet plenum



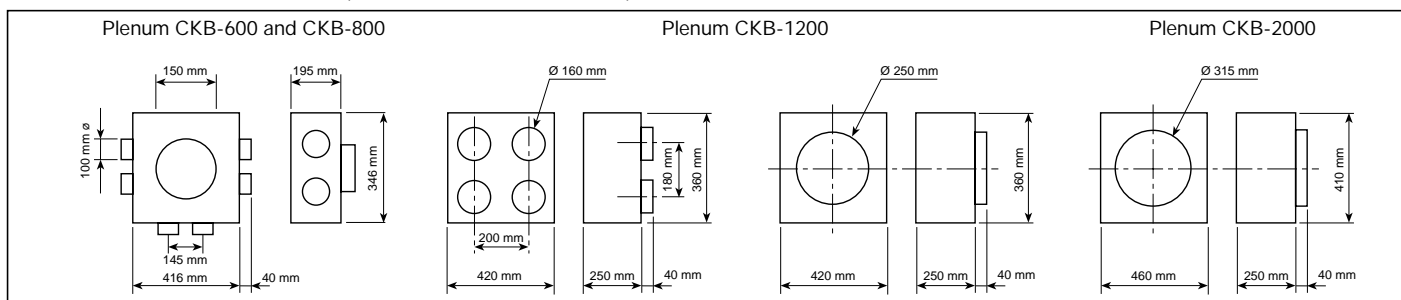
Inlet spigots



Protection guard



Type	Protection guard	Description	Plenum				Inlet spigot
			n°	Ø D asp.	n°	Ø D dis.	Description
CKB-600 CKB-800	DEF-600-K	Plenum CKB-800	1	150	6	100	EMB ASP Ø 160 EMB ASP Ø 200
CKB-1200	DEF-1200-K	Plenum CKB-1200 (1/250)			1	250	EMB ASP CKB-1200
		Plenum CKB-1200 (4/160)			4	160	
CKB-2000	DEF-2000-K	Plenum CKB-2000			1	315	EMB ASP CKB-2000



General accessories



REB
Electronic,
single phase speed
controller



GSA
Flexible aluminium
ducting



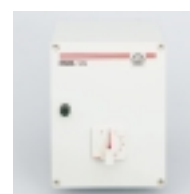
CX
Worm drive fixing
clamps



CT
Roof termination



BOC
Circular air valve



RMB
Auto transformer,
single phase speed
control regulator