

## Winkhaus AutoLock AV2+

AUTOMATIC Multi-Point Locking System



Winkhaus UK Ltd

2950 Kettering Parkway, Kettering,  
Northants NN15 6XZ  
Tel: +44 (0)1536 316000  
Fax: +44 (0)1536 416516

[www.winkhaus.co.uk](http://www.winkhaus.co.uk)  
email: [enquiries@winkhaus.co.uk](mailto:enquiries@winkhaus.co.uk)



# Winkhaus AutoLock AV2+

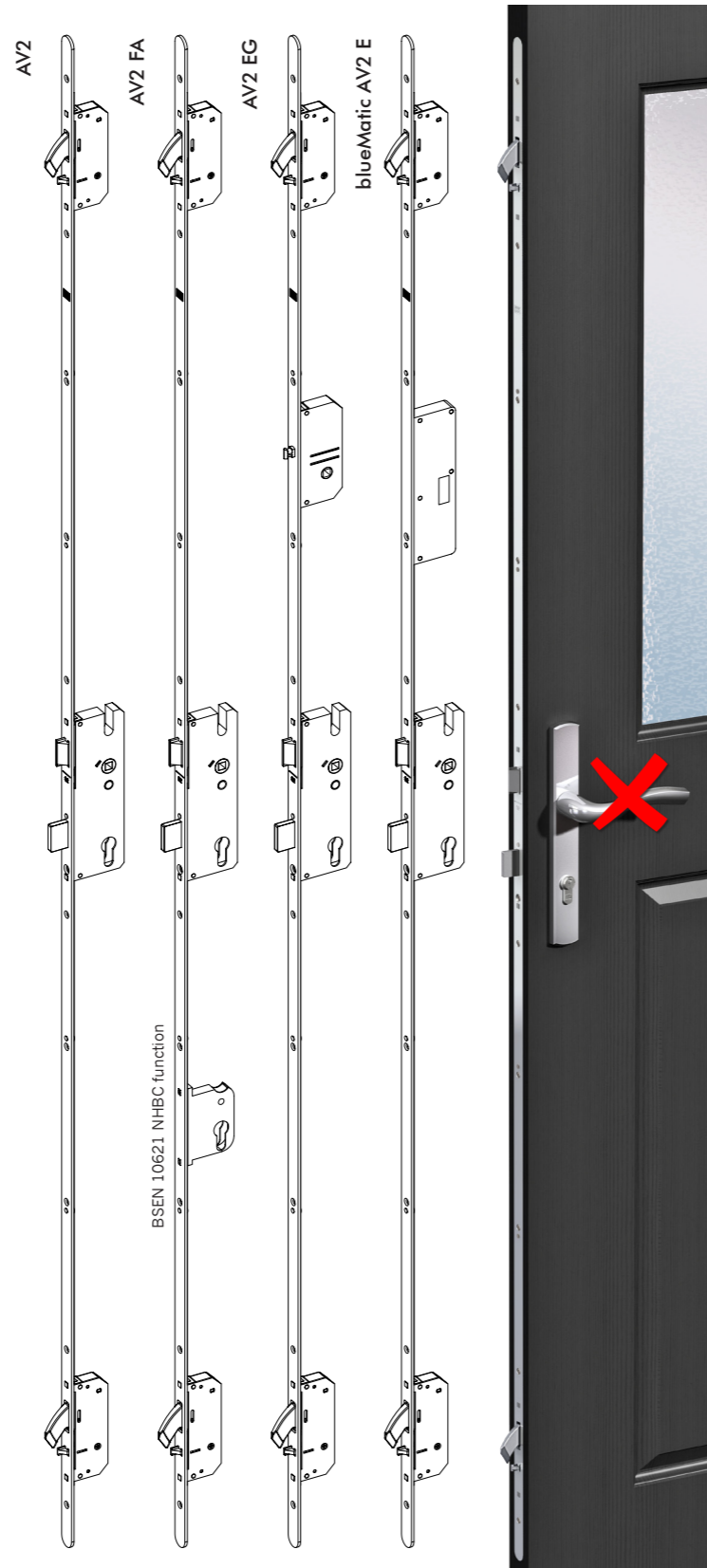
## AUTOMATIC Multi-Point Locking System - Locks automatically as soon as the door is closed!!

At last the method to close and lock your main entrance door has moved into the 21st century!!

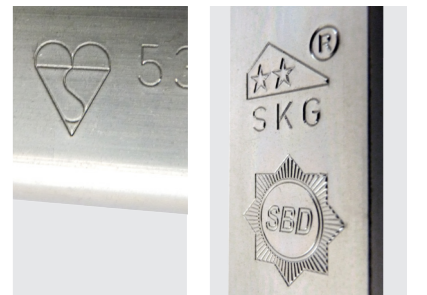
- Do you sometimes find it difficult to lift the handle levers on conventional multi-point locks to lock the door?
- Are you frustrated that you can't turn the key because the lock has not been fully thrown?
- Perhaps your door is draughty because the lock has not been fully engaged?
- Do you worry if you have remembered to lock your door after entering your property or before going to bed?
- Do you want peace of mind that your door is always fully locked automatically as soon as you close it?
- Do you want a locking system that is fully approved by the Police and has passed all the tests in doors for weather performance, durability, fire and burglar resistance?
- Would you like a motor upgrade so that you can unlock your door with a key fob the same as you do with your car?

If all these things matter to you then the answer is the Winkhaus AutoLock AV2+. This product is tried and tested and used extensively throughout Europe. In the UK it has become a product of choice for sheltered housing schemes for the Elderly and also for Fire doors in Flats and Apartments.

Available in four options, Standard, FA Double Deadlock NHBC with two cylinders, Entryguard™ integral door opening limiter (operates like a door chain but is concealed) and AV2E with the optional motorised unlocking facility.

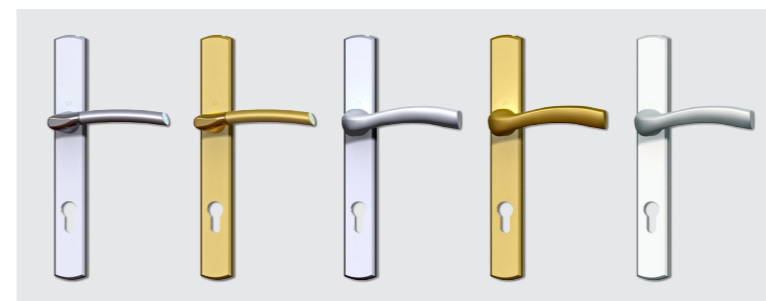


- ✓ By eliminating the need to lift the handle to engage the lock, the AV2 is ideal for the elderly. The AV2 has uniquely been awarded The Owl Mark™ approval issued by the University of Birmingham Centre for Gerontology which independently assesses products for their suitability of use with the aged.
- ✓ AV2 in combination with Winkhaus Ecoframe™ is successfully tested in doors for Fire Door FD30 applications
- ✓ The AV2 is never “just locked on the latch”. When closing the door, two solid anti-pushback hooks automatically operate to achieve instant security.
- ✓ When the door is closed, high security nickel plated steel hooks fully penetrate the heavy duty steel keeps and help prevent forcing apart of the door and frame. AV2 is Police Secured By Design, PAS23/24, SKG, and VdS accredited.
- ✓ The high performance gearbox is tested to 100,000 cycles and offers the lowest possible operating forces and helps prevent handle ‘droop’.
- ✓ Tested to PAS 023 the AV2 hook shape provides low operating forces and helps doors achieve a higher level of weather performance.
- ✓ Winkhaus locks have a protective surface coating in excess of EN 1670 : 2007 Grade 4 which is designated as ‘Very high corrosion resistance’
- ✓ The ability to upgrade to AV2-E by adding a motor allows for the option to link to an intercom system, remote control device etc.
- ✓ AV2 Multi-point Locks have been designed to harmonise with the Winkhaus range of security europrofile cylinders, Armorshield™ cylinder guard and Winkhaus XR6-51 Kitemark profile cylinder (KM531333).
- ✓ The AV2 is superbly engineered and manufactured in Germany. With over 150 years experience in producing locking systems for the world market, Winkhaus is a market leader producing innovative security solutions to meet the challenges of tomorrows rapidly changing security and ease of use requirements.



XR6-51 Kitemark cylinder

Police 'Secured by Design' stamped



Range of special Winkhaus Palladio mix n' match handle levers incorporating anodised or PVD brass and chrome levers



Handles incorporate Hoppe 'Quick-Fit technology'